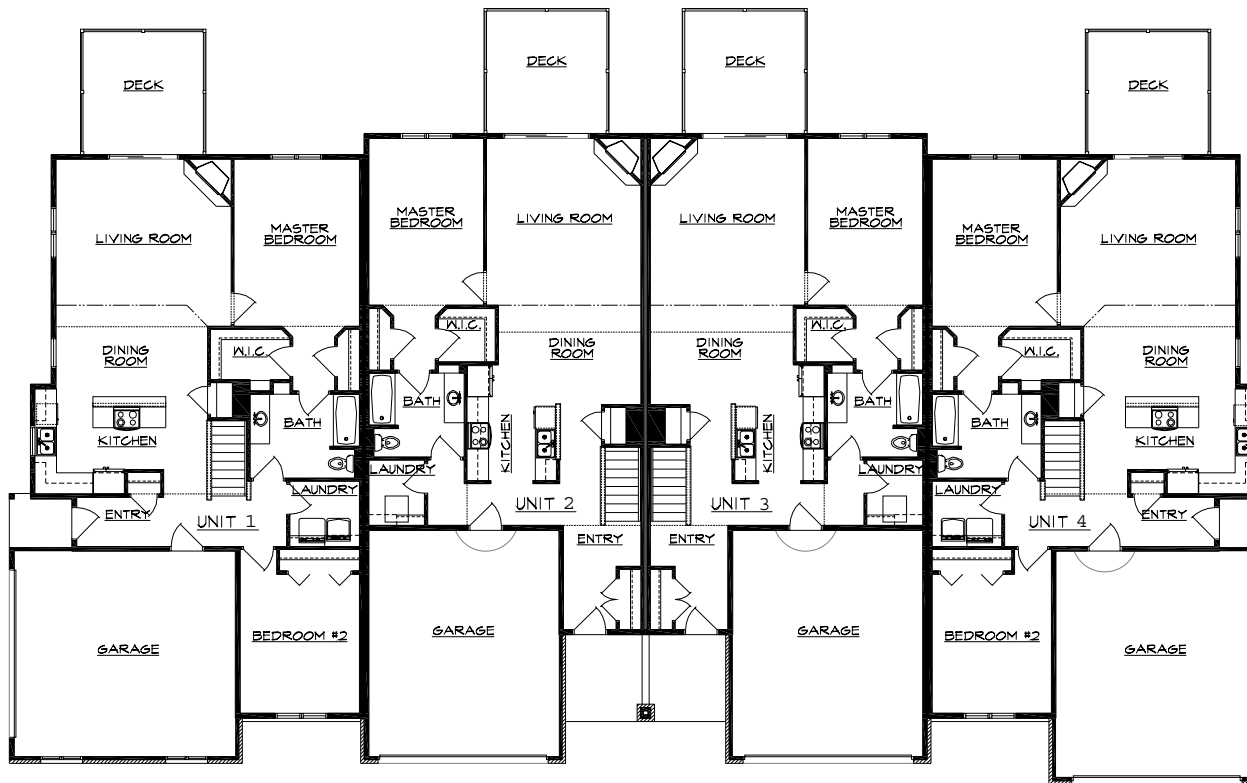




Lower Level Plan

Baird's Crossing Condominiums

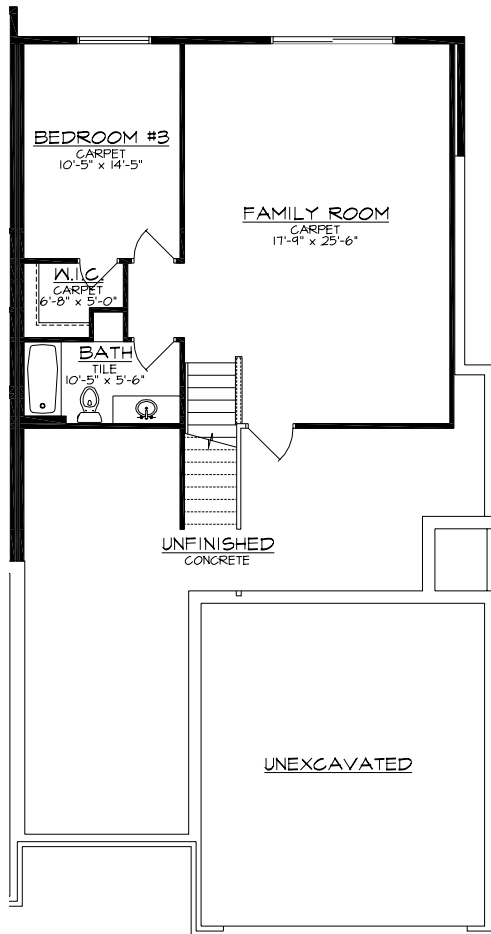
2441 & 2455 Remington Road



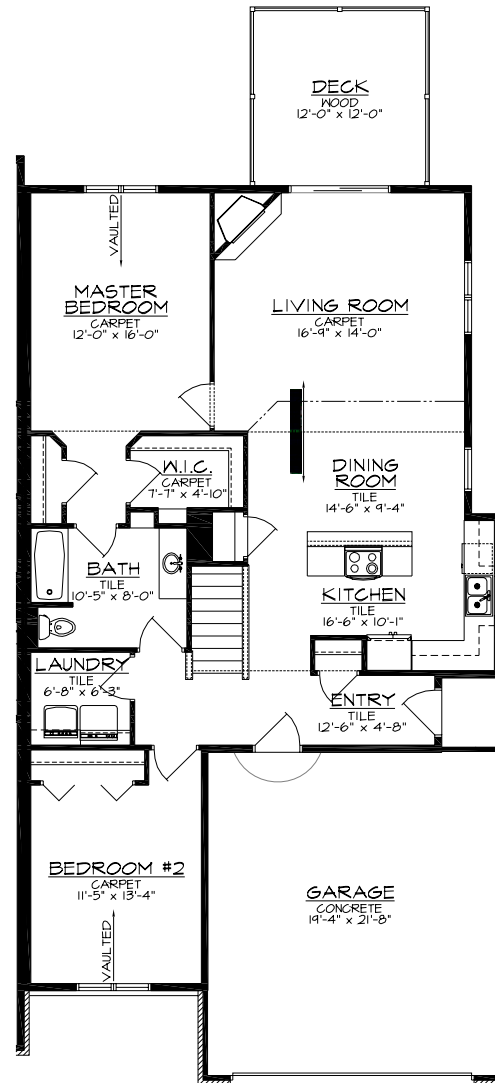
First Floor Plan

Baird's Crossing Condominiums

2441 & 2455 Remington Road



Lower Level - 777 S.F.



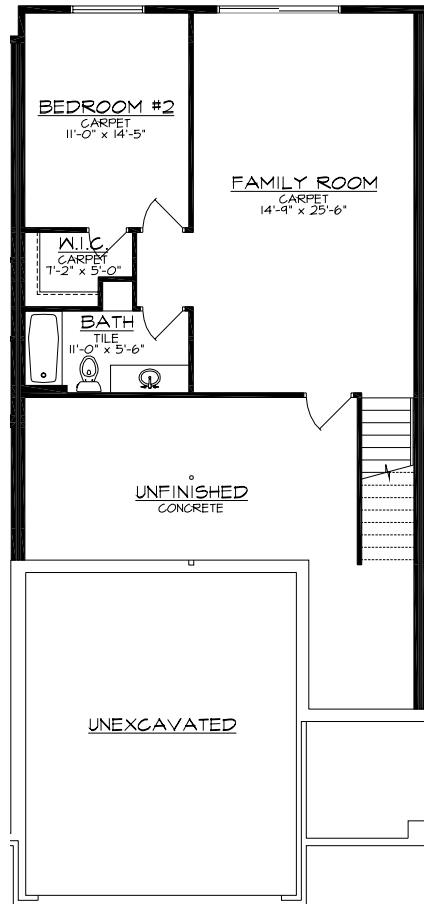
First Floor - 1,353 S.F.

Baird's Crossing Condominiums

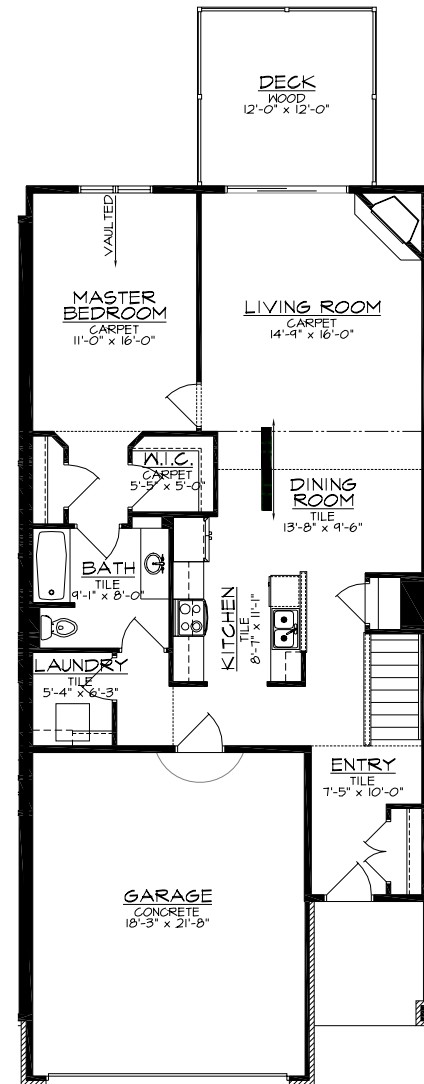
2441 Remington Road - Units 1 & 4 - 2,130 S.F.

(Unit 1 mirrored)

May 23, 2006



Lower Level - 738 S.F.



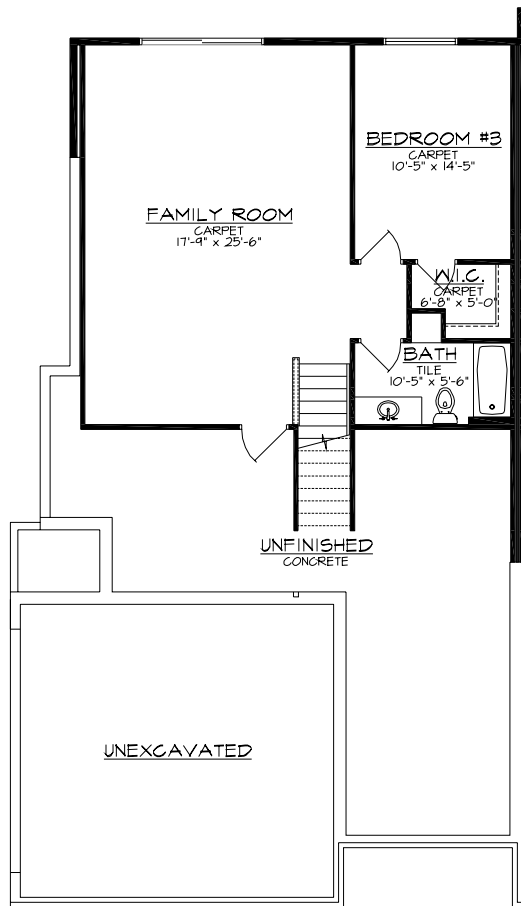
First Floor - 1,109 S.F.

Baird's Crossing Condominiums

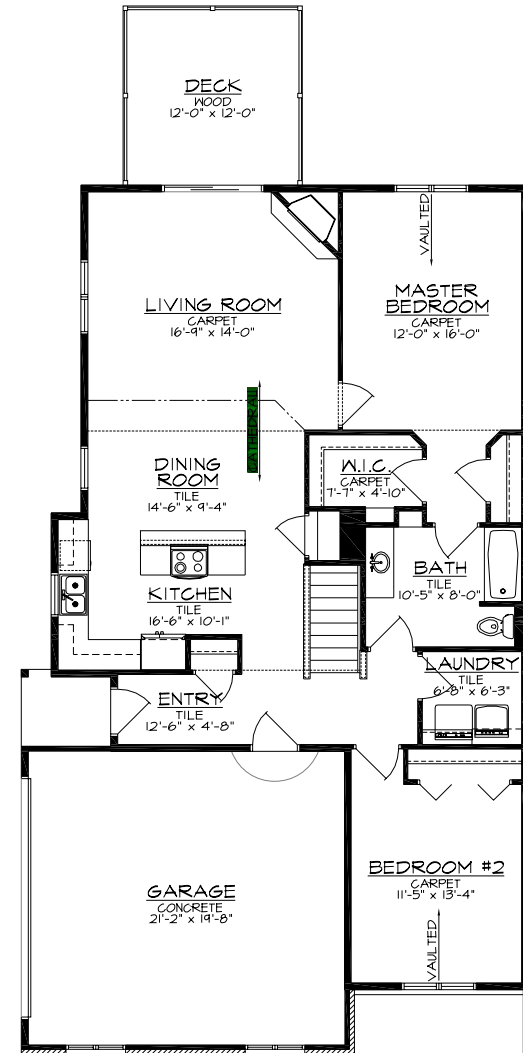
2441 & 2455 Remington Road - Units 2 & 3 - 1,847 S.F.

(Unit 3 mirrored)

May 23, 2006



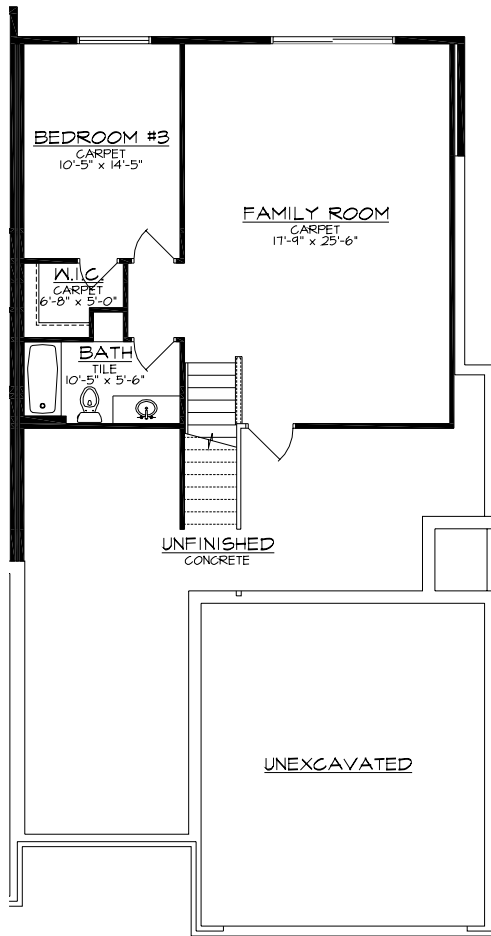
Lower Level - 777 S.F.



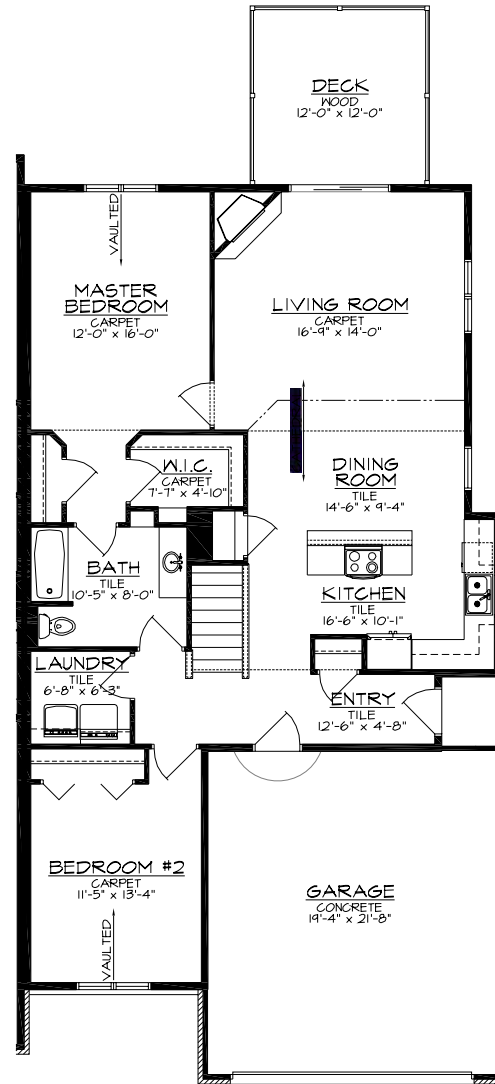
First Floor - 1,353 S.F.

Baird's Crossing Condominiums

2455 Remington Road - Unit 1 - 2,130 S.F.



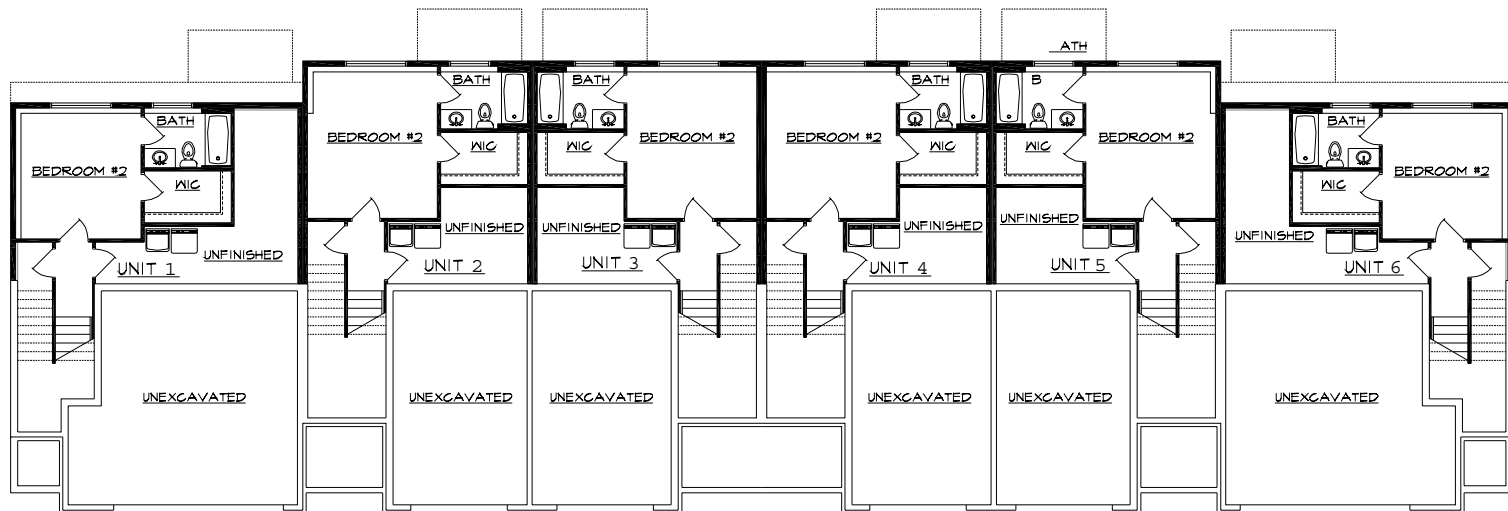
Lower Level - 777 S.F.



First Floor - 1,353 S.F.

Baird's Crossing Condominiums

2455 Remington Road - Unit 4 - 2,130 S.F.



Lower Level Plan

Baird's Crossing Condominiums

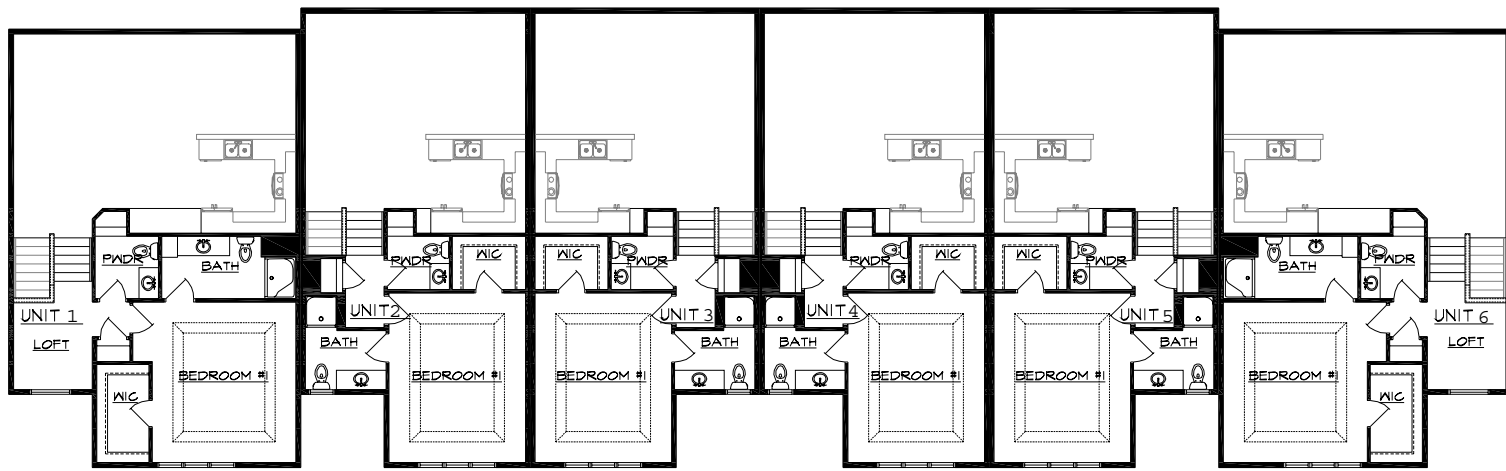
2443 Remington Road



First Floor Plan

Baird's Crossing Condominiums

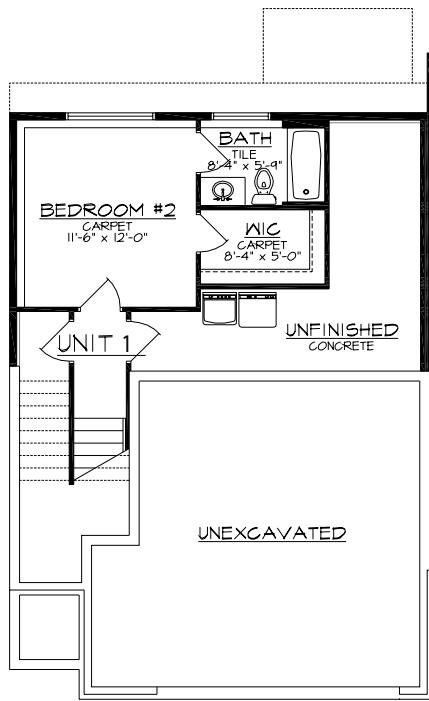
2443 Remington Road



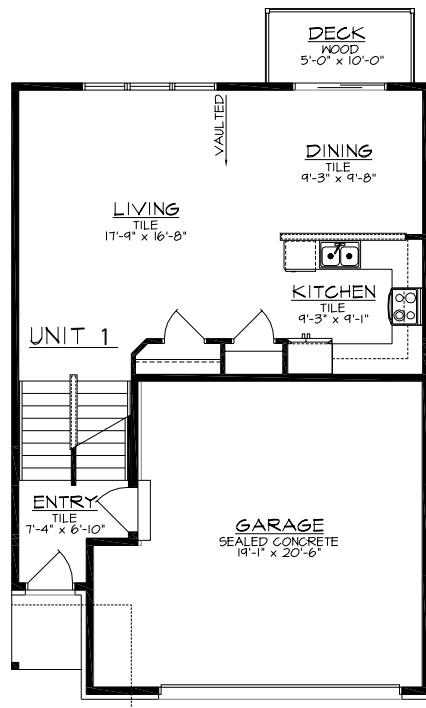
Second Floor Plan

Baird's Crossing Condominiums

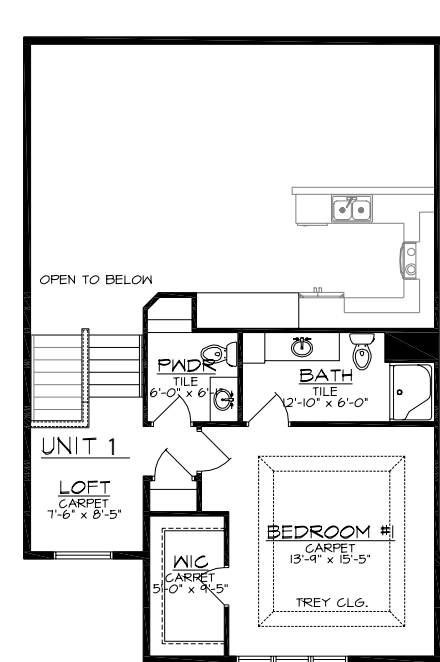
2443 Remington Road



Lower Level - 331 S.F.



First Floor - 677 S.F.

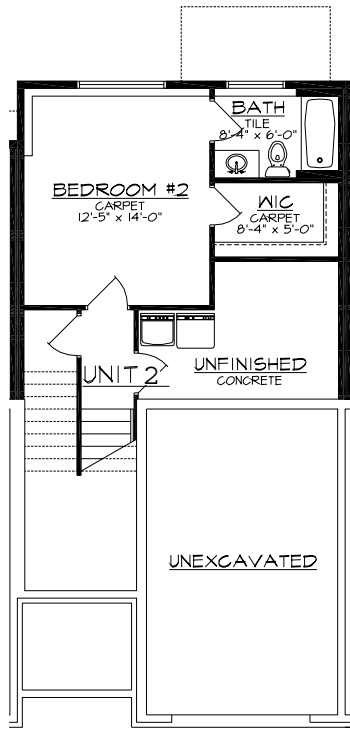


Second Floor - 537 S.F.

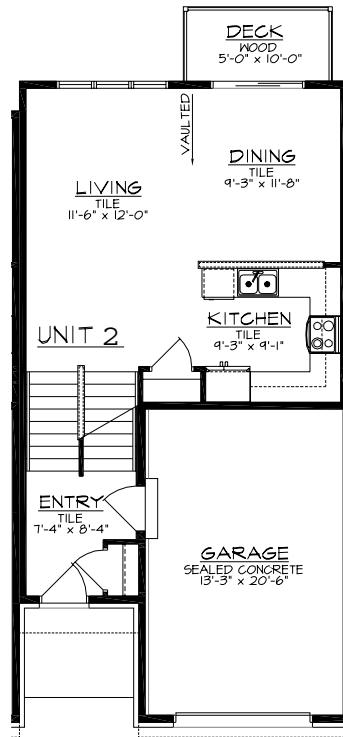
Baird's Crossing Condominiums
 2443 Remington Road - Units 1 & 6 - 1,545 S.F.

(Unit 6 mirrored)

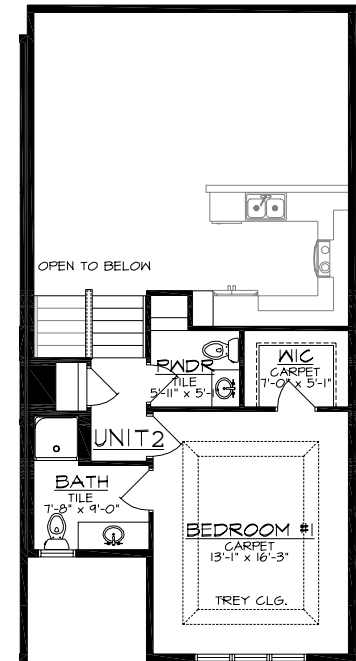
May 23, 2006



Lower Level - 358 S.F.



First Floor - 597 S.F.

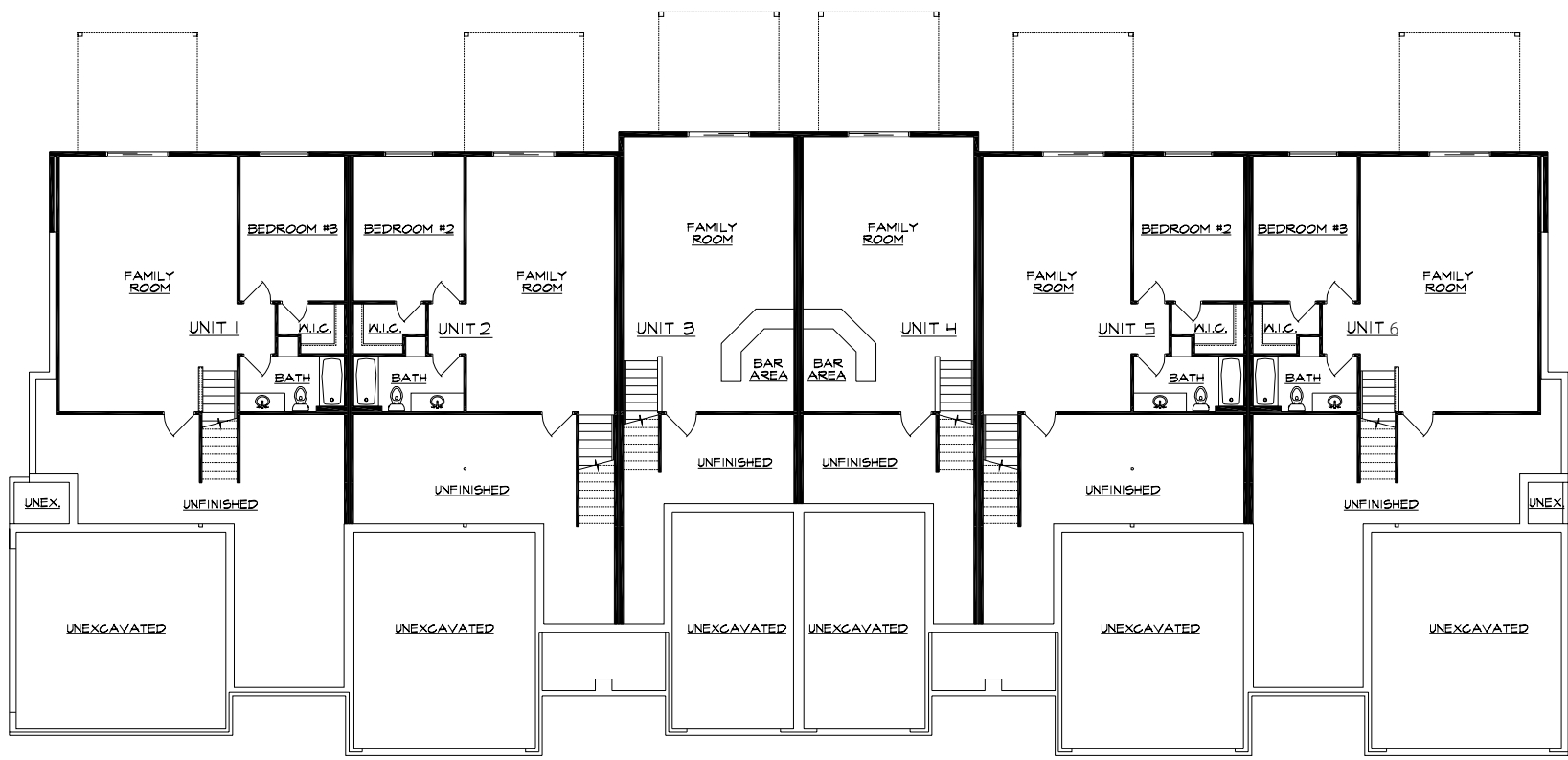


Second Floor - 428 S.F.

Baird's Crossing Condominiums
 2443 Remington Road - Units 2, 3, 4, & 5 - 1,383 S.F.

(Units 3 & 5 mirrored)

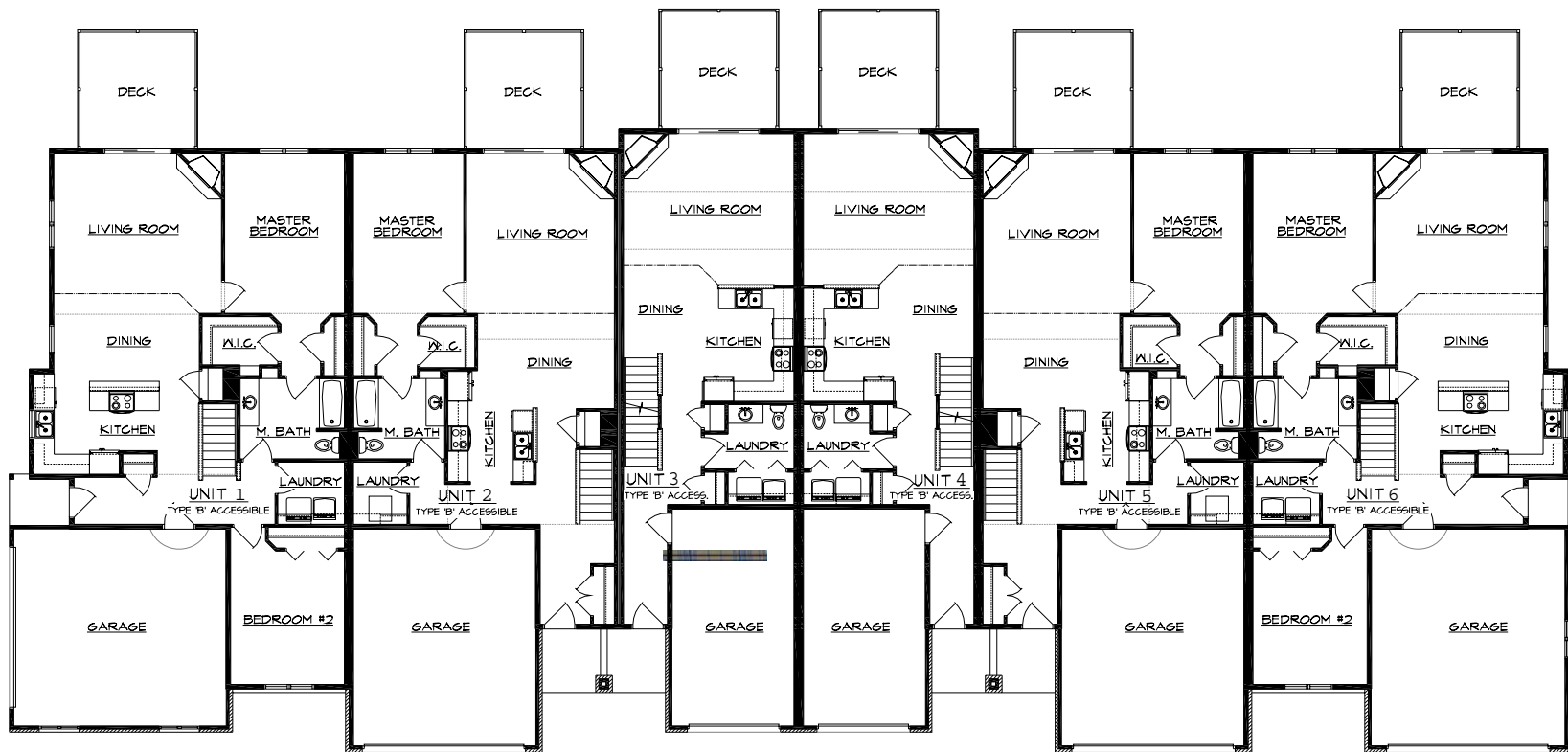
May 23, 2006



Lower Level Plan

Baird's Crossing Condominiums

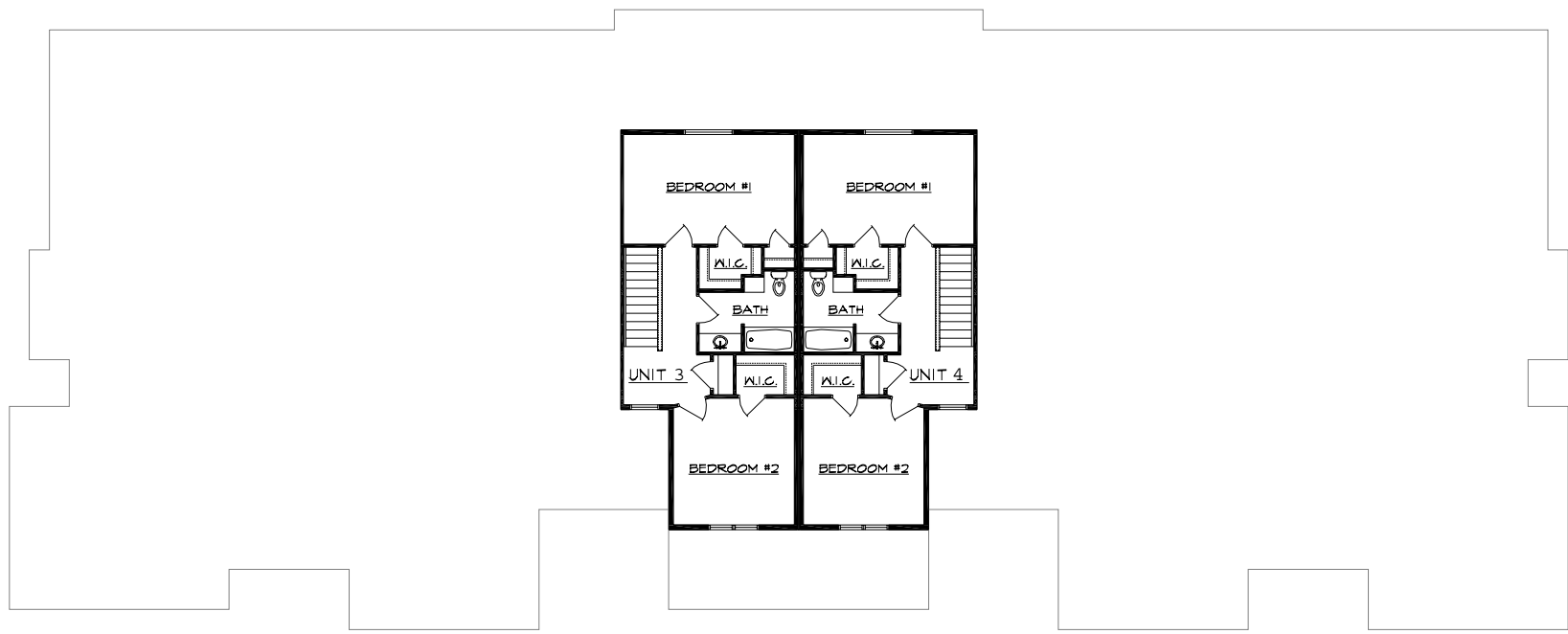
2445 Remington Road



First Floor Plan

Baird's Crossing Condominiums

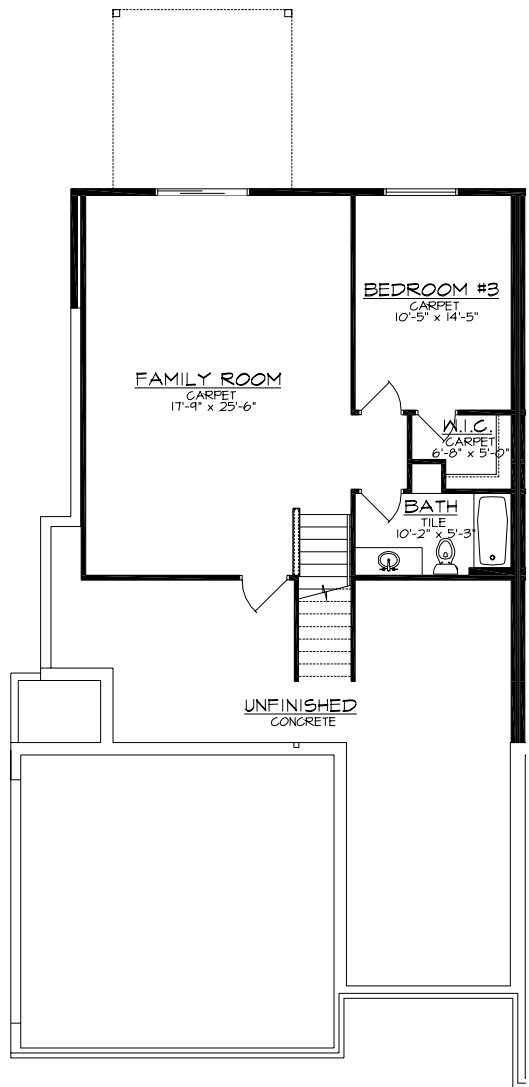
2445 Remington Road



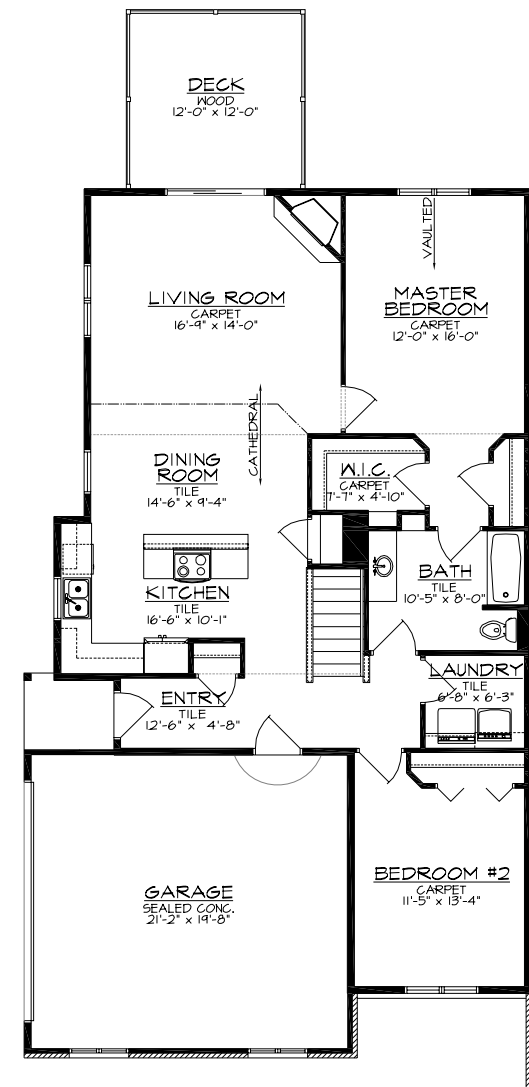
Second Floor Plan

Baird's Crossing Condominiums

2445 Remington Road



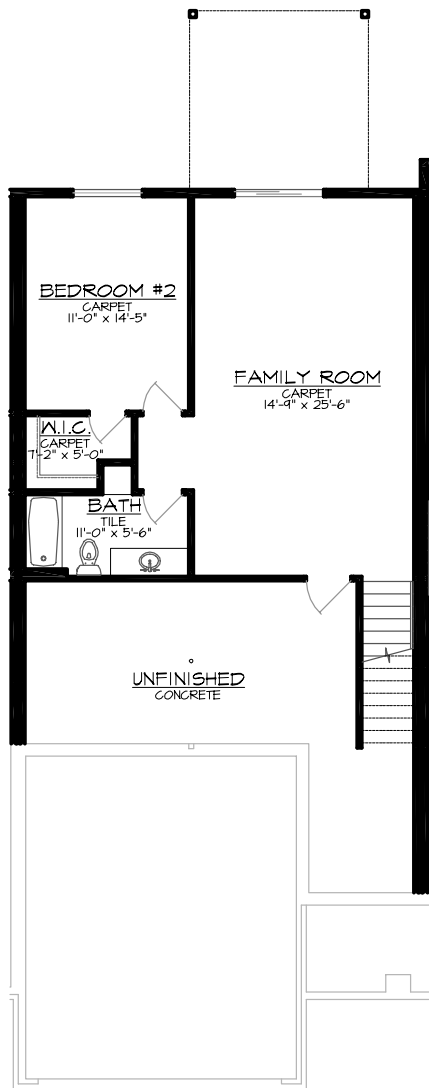
Lower Level - 771 S.F.



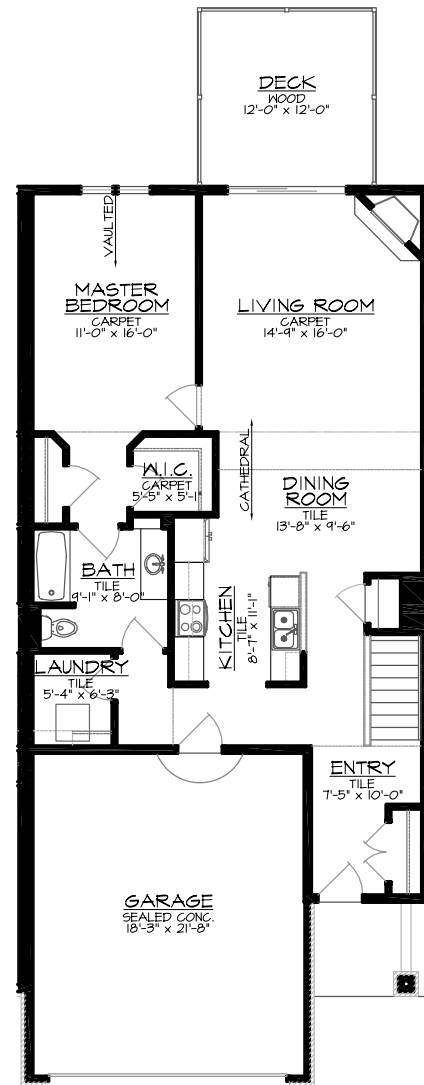
First Floor - 1,353 S.F.

Baird's Crossing Condominiums

2445 Remington Road - Unit 1 - 2,124 S.F.



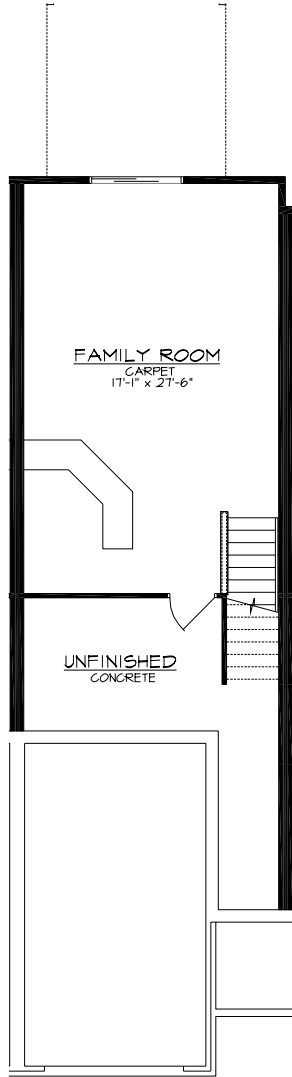
Lower Level - 737 S.F.



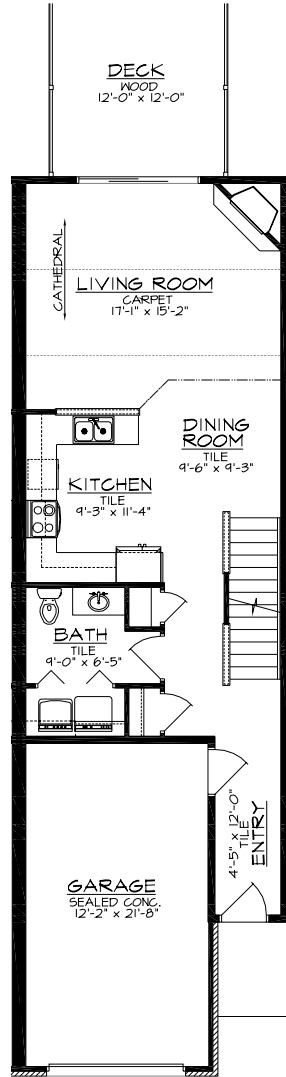
First Floor - 1,109 S.F.

Baird's Crossing Condominiums
 2445 Remington Road - Units 2 & 5 - 1,846 S.F.

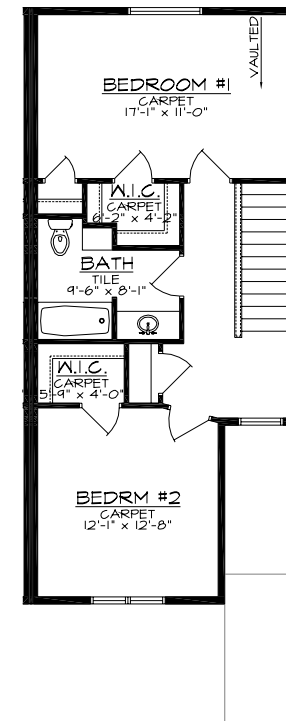
(Unit 5 mirrored)
 May 23, 2006



Lower Level - 503 S.F.



First Floor - 748 S.F.

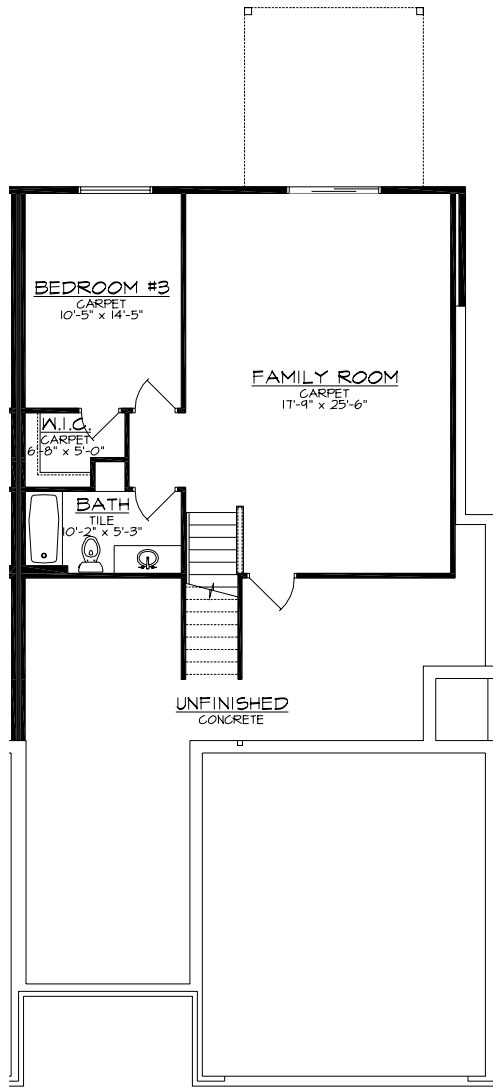


Second Floor - 655 S.F.

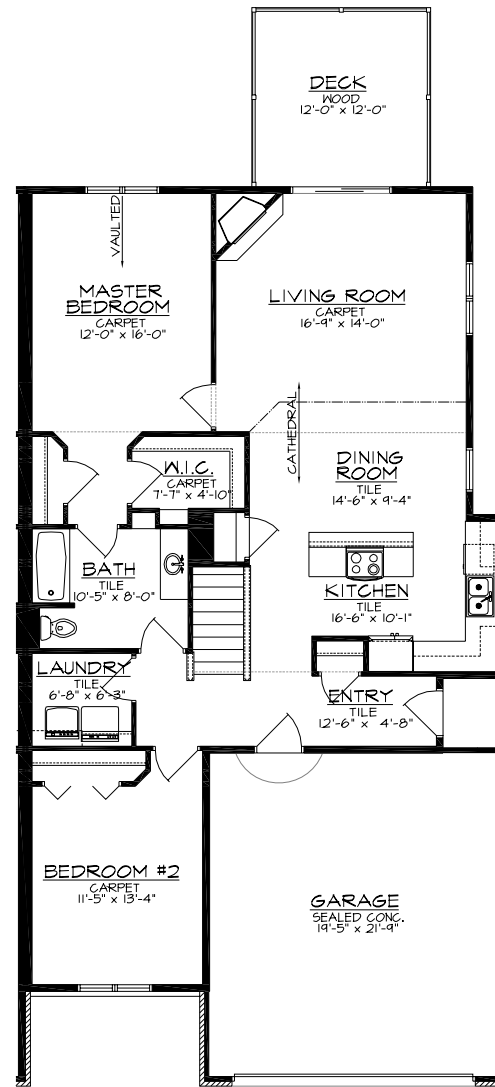
Baird's Crossing Condominiums
2445 Remington Road - Units 3 & 4 - 1,906 S.F.

(Unit 4 mirrored)

May 23, 2006



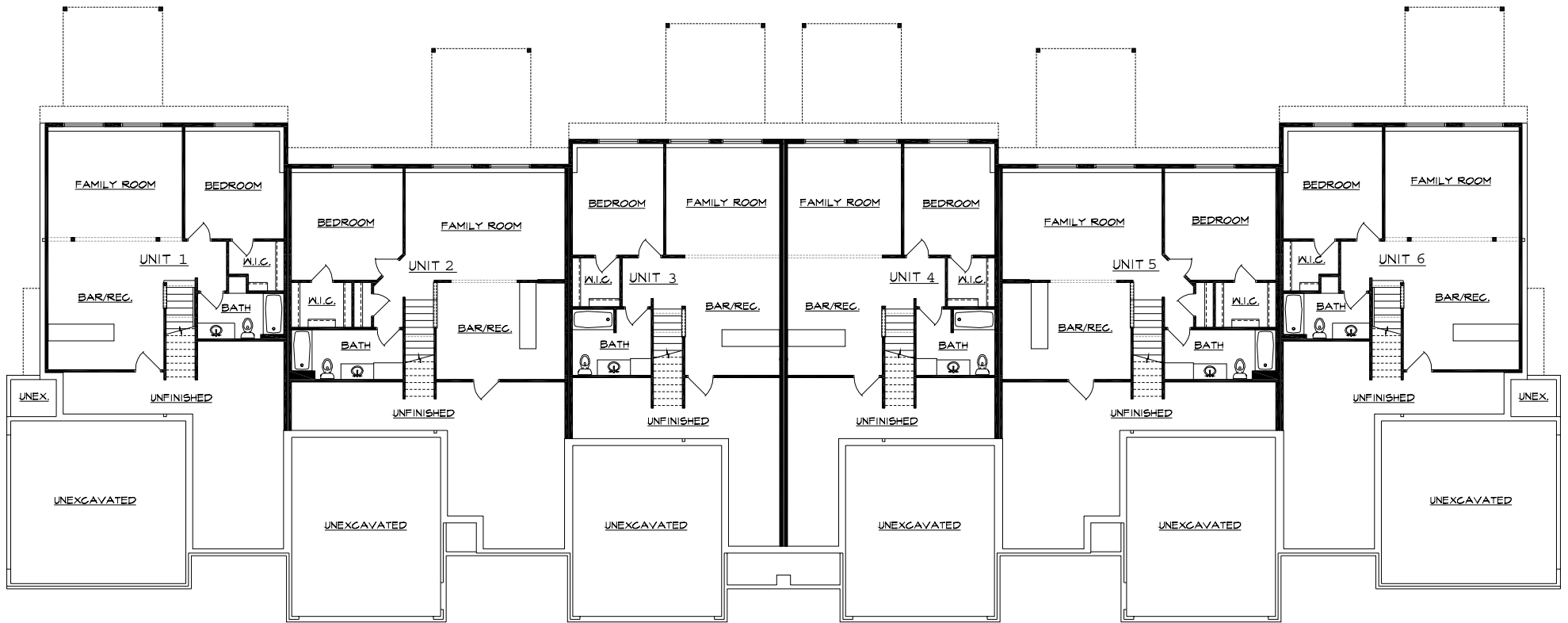
Lower Level - 771 S.F.



First Floor - 1,353 S.F.

Baird's Crossing Condominiums

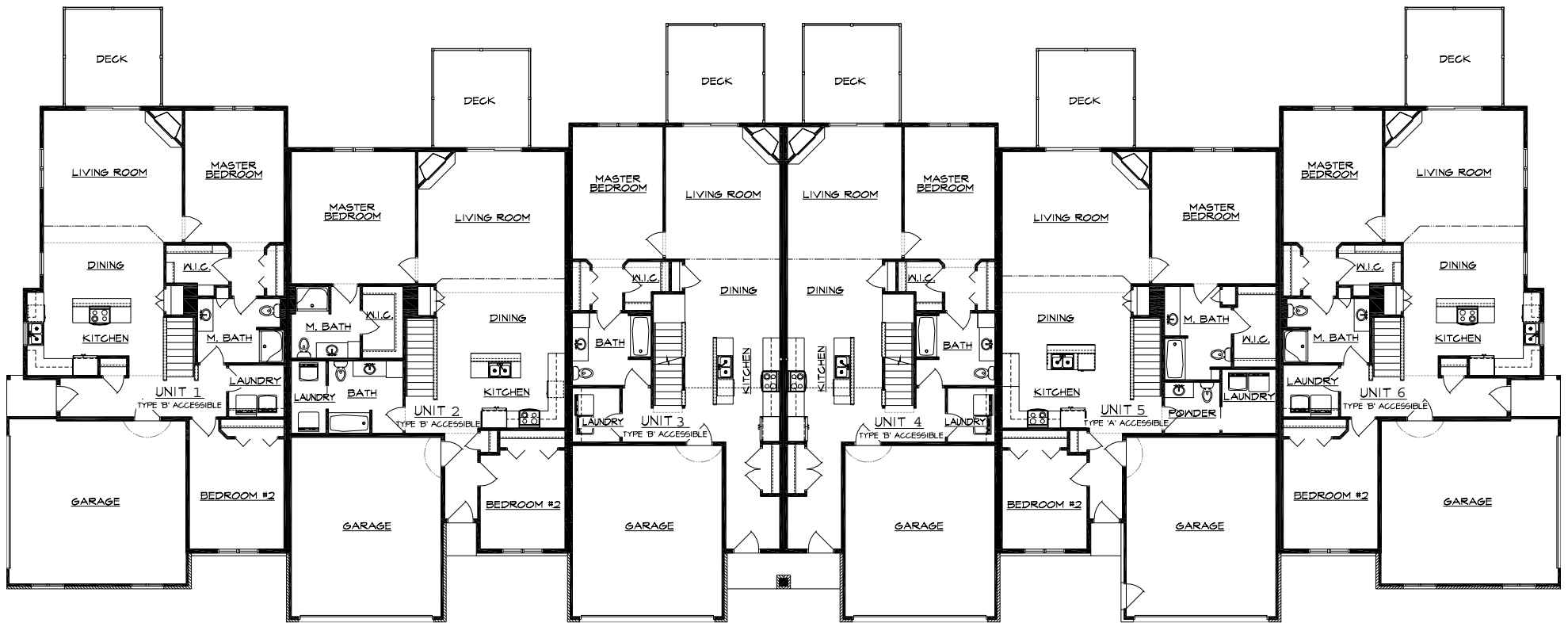
2445 Remington Road - Unit 6 - 2,124 S.F.



Lower Level Plan

Baird's Crossing Condominiums

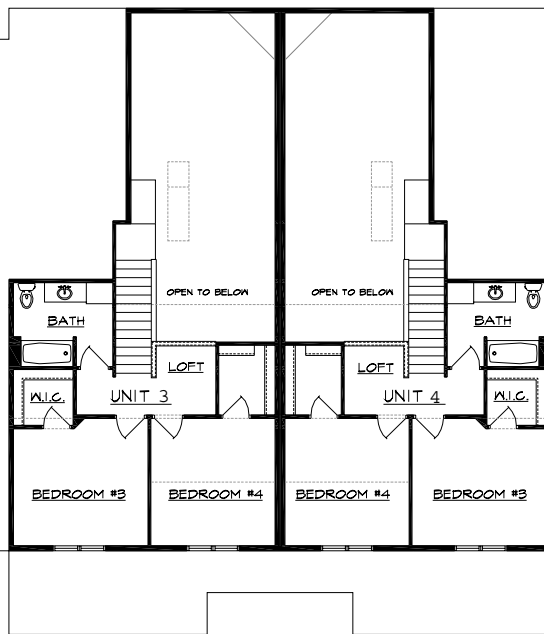
2447 & 2453 Remington Road



First Floor Plan

Baird's Crossing Condominiums

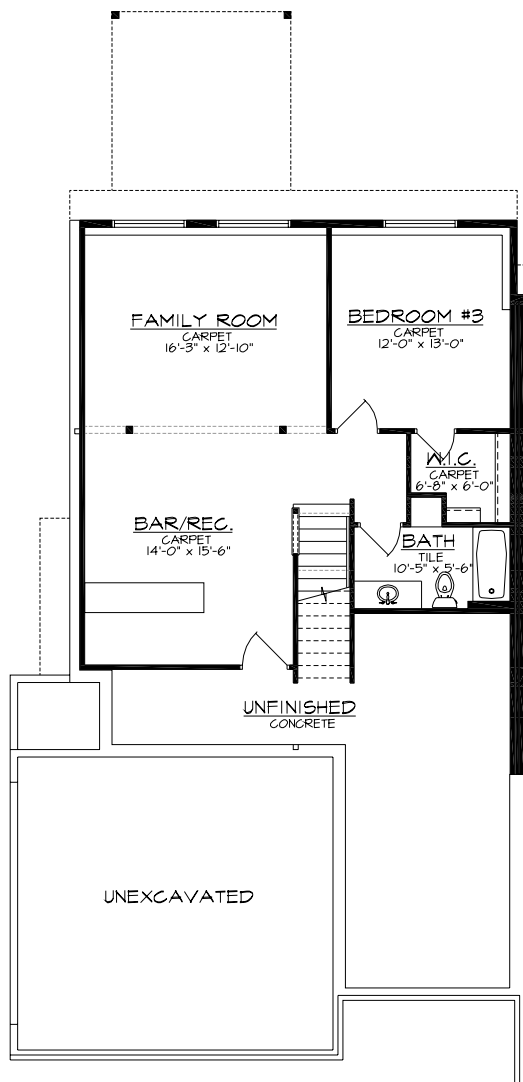
2447 & 2453 Remington Road



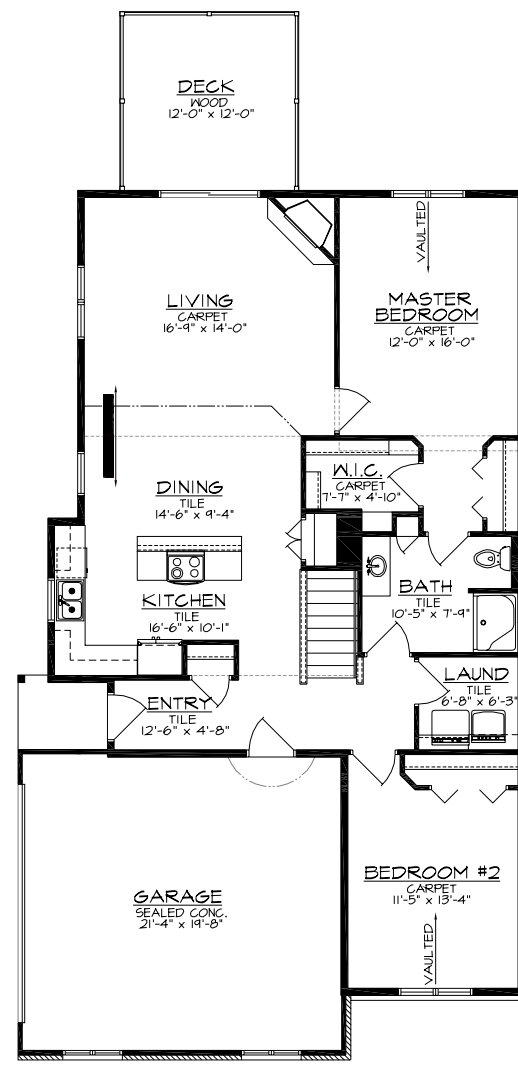
Second Floor Plan

Baird's Crossing Condominiums

2447 & 2453 Remington Road



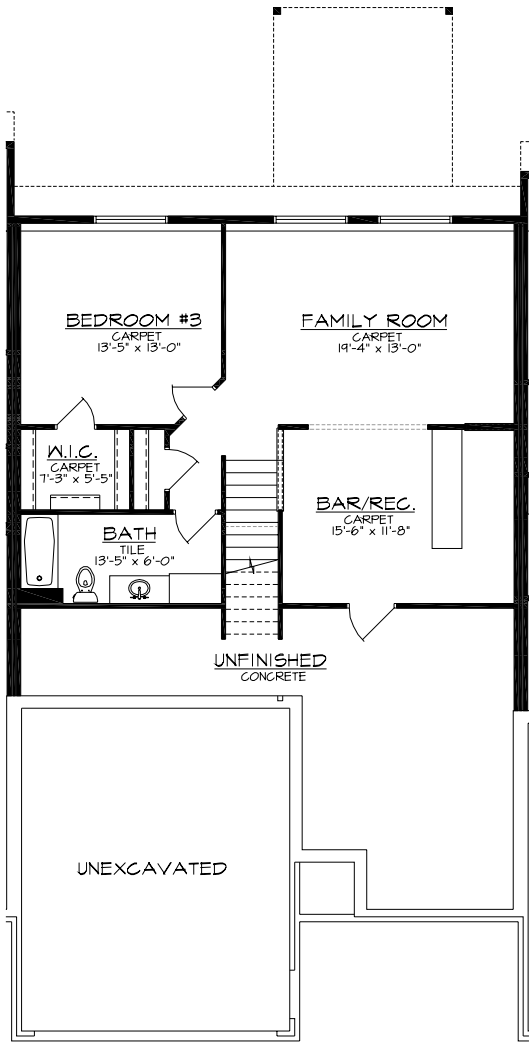
Lower Level - 832 S.F.



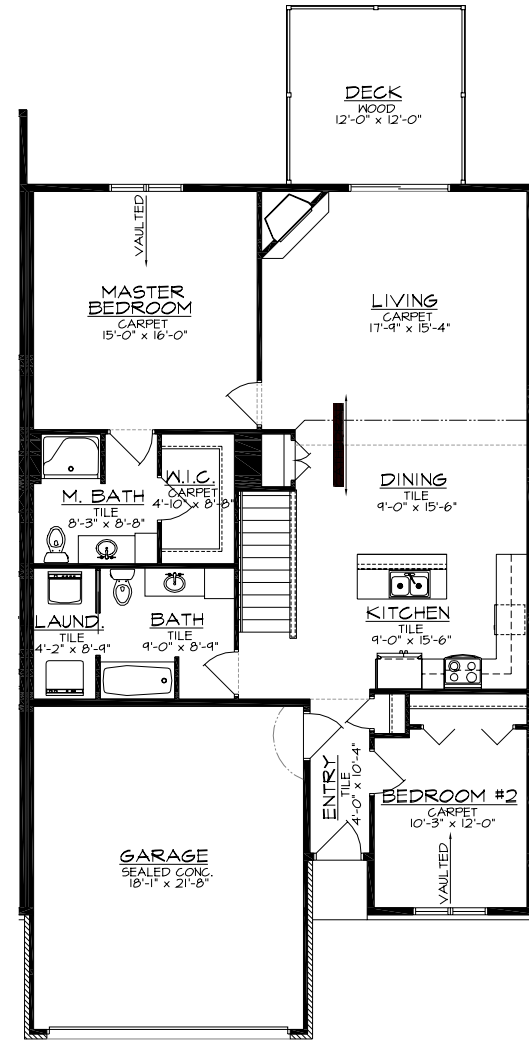
First Floor - 1,349 S.F.

Baird's Crossing Condominiums
 2447 & 2453 Remington Road - Units 1 & 6 - 2,181 S.F.

(Unit 6 mirrored)
 May 23, 2006

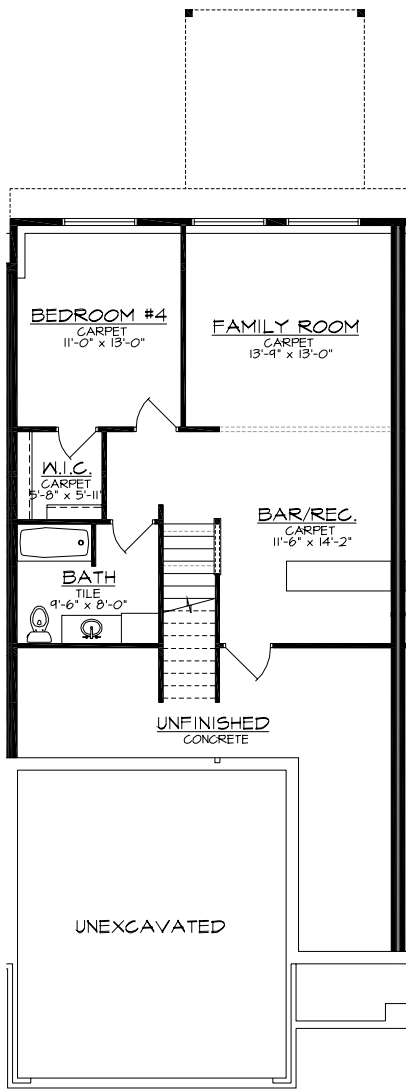


Lower Level - 878 S.F.

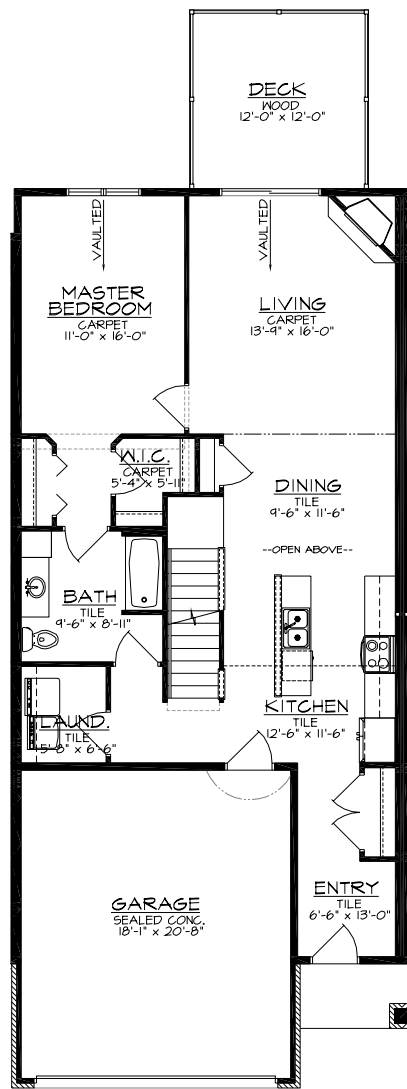


First Floor - 1,401 S.F.

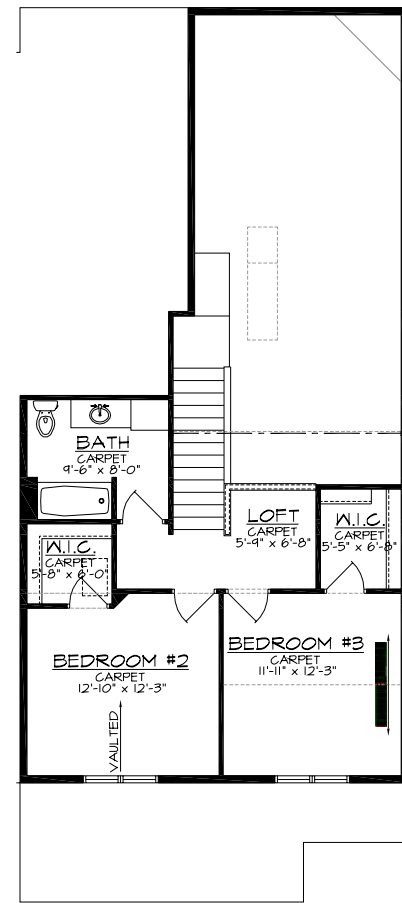
Baird's Crossing Condominiums
 2447 & 2453 Remington Road - Unit 2 - 2,279 S.F.



Lower Level - 742 S.F.



First Floor - 1,117 S.F.



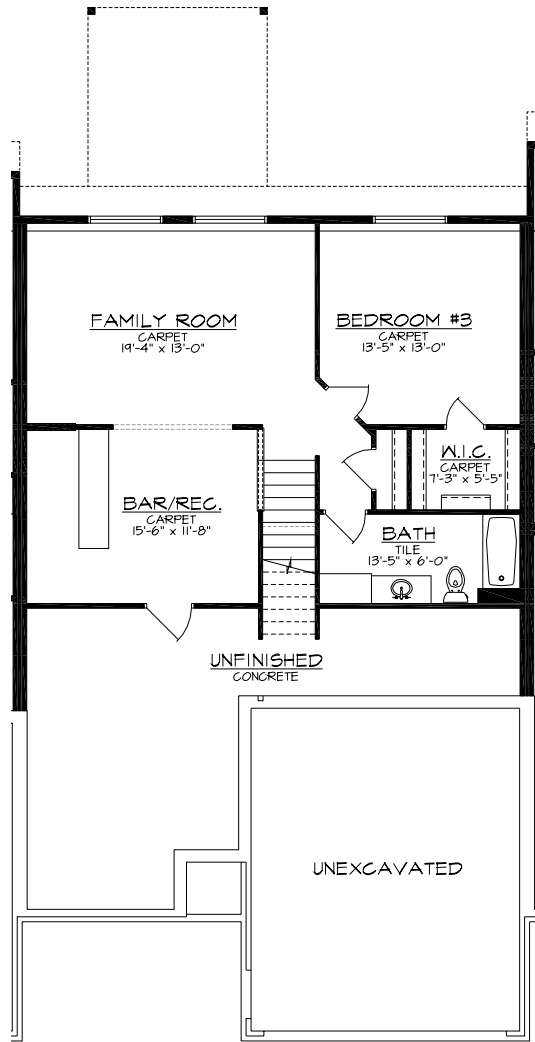
Second Floor - 571 S.F.

Baird's Crossing Condominiums

2447 & 2453 Remington Road - Units 3 & 4 - 2,430 S.F.

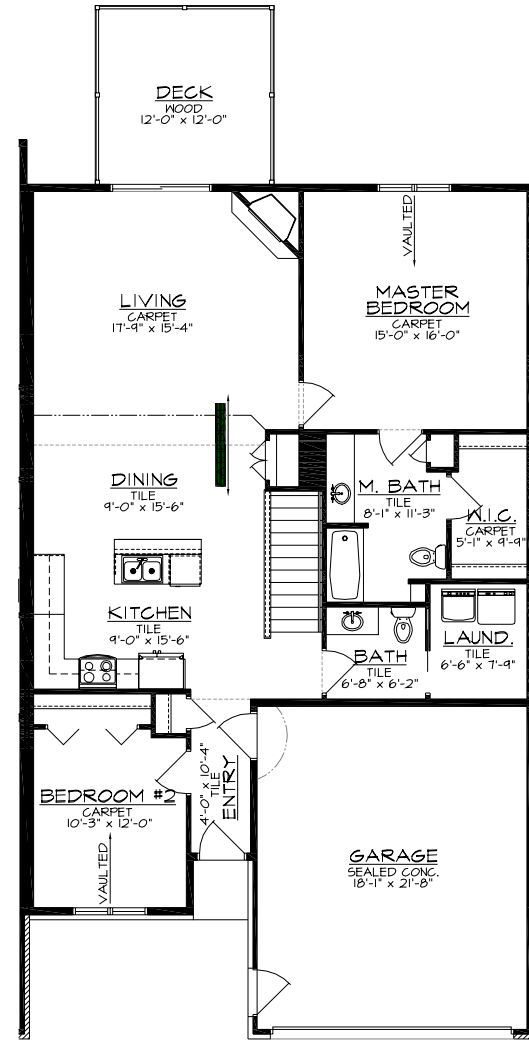
(Unit 4 mirrored)

May 23, 2006



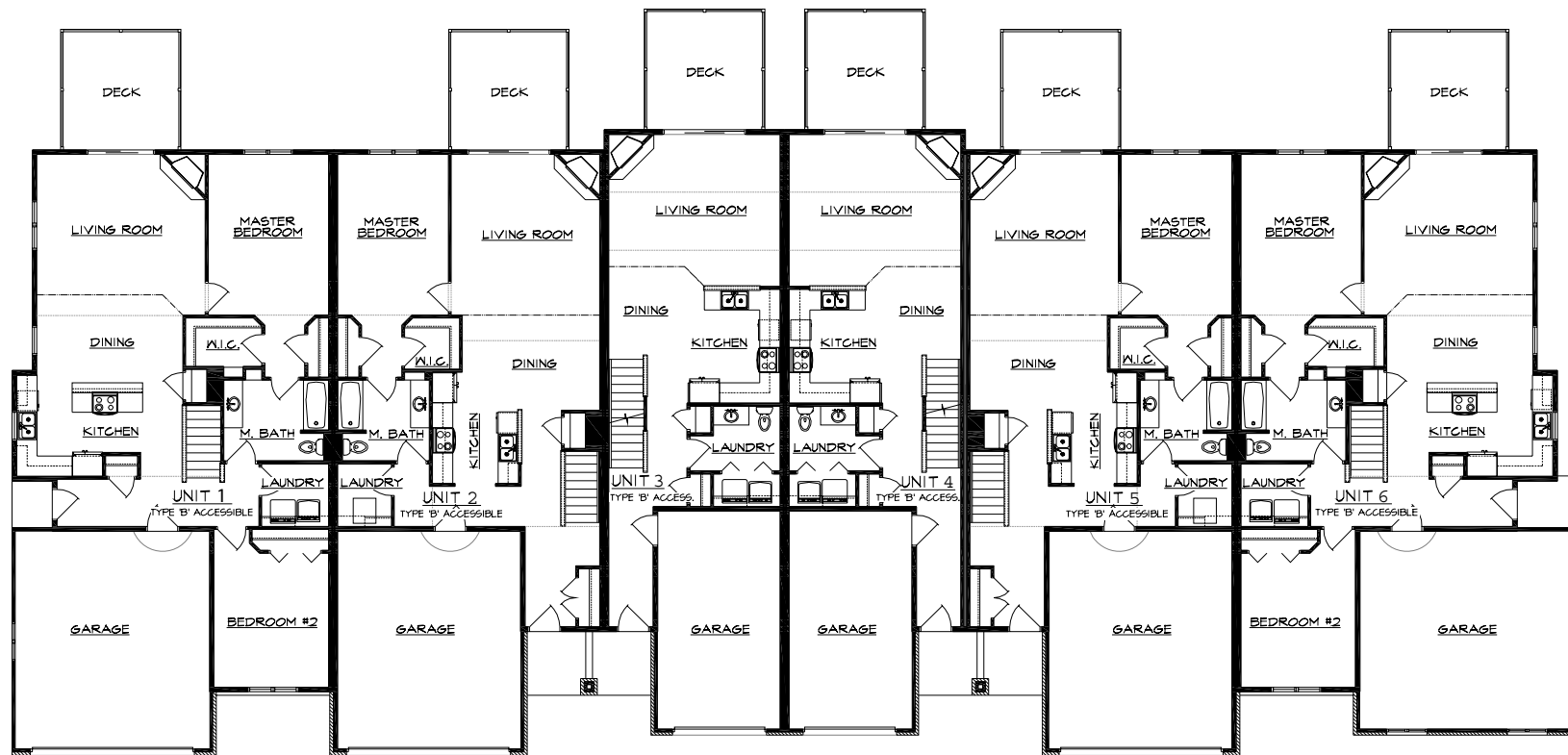
Lower Level - 878 S.F.

Type "A" Accessible



First Floor - 1,401 S.F.

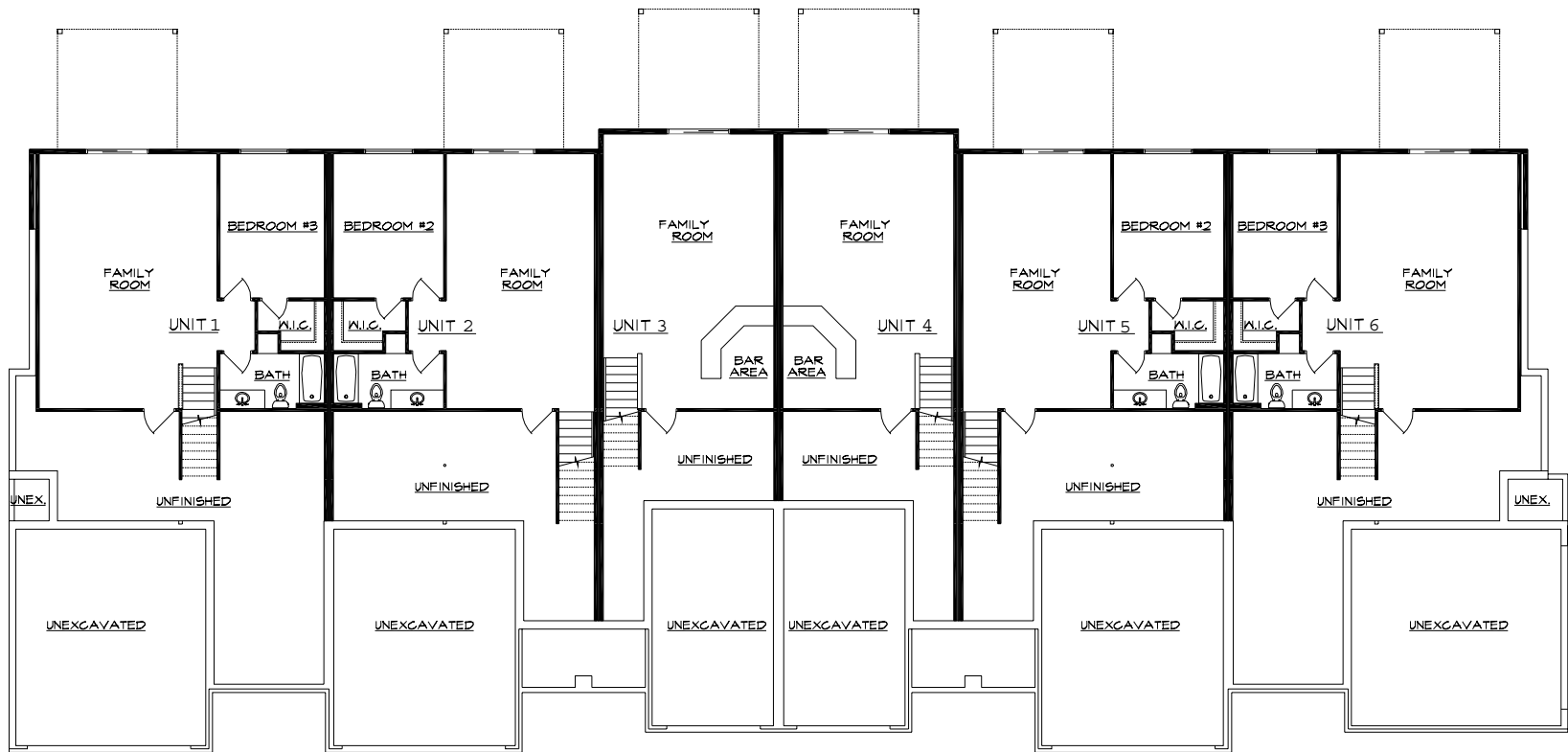
Baird's Crossing Condominiums
 2447 & 2453 Remington Road - Unit 5 - 2,279 S.F.



First Floor Plan

Baird's Crossing Condominiums

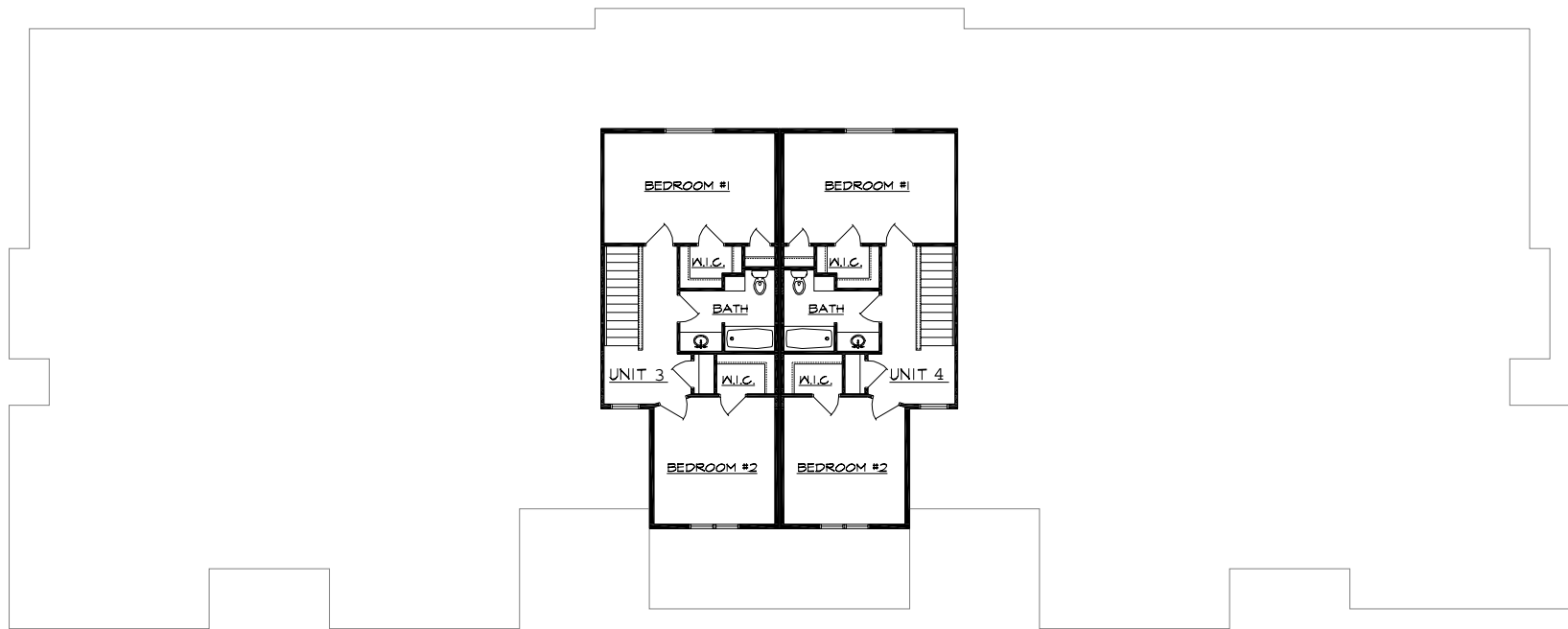
2449 & 2451 Remington Road



Lower Level Plan

Baird's Crossing Condominiums

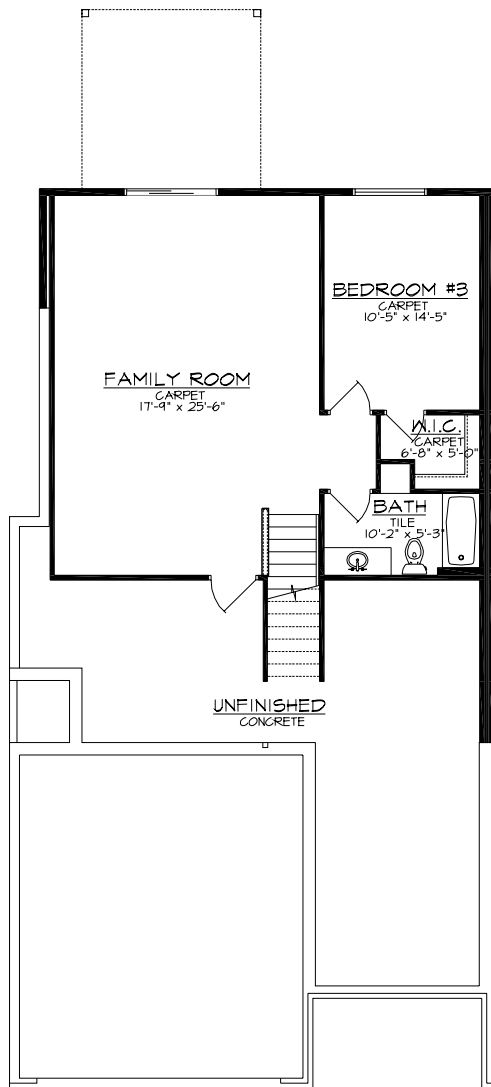
2449 & 2451 Remington Road



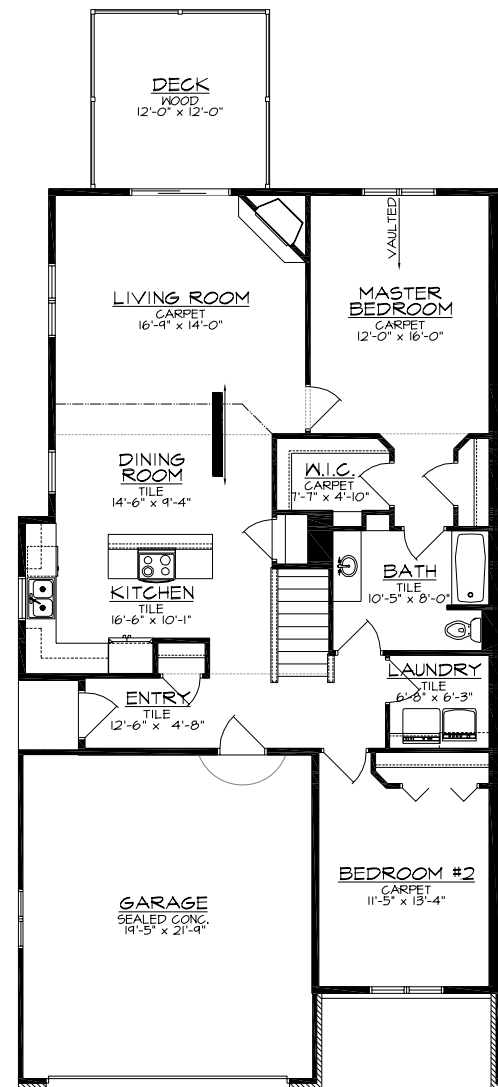
Second Floor Plan

Baird's Crossing Condominiums

2449 & 2451 Remington Road

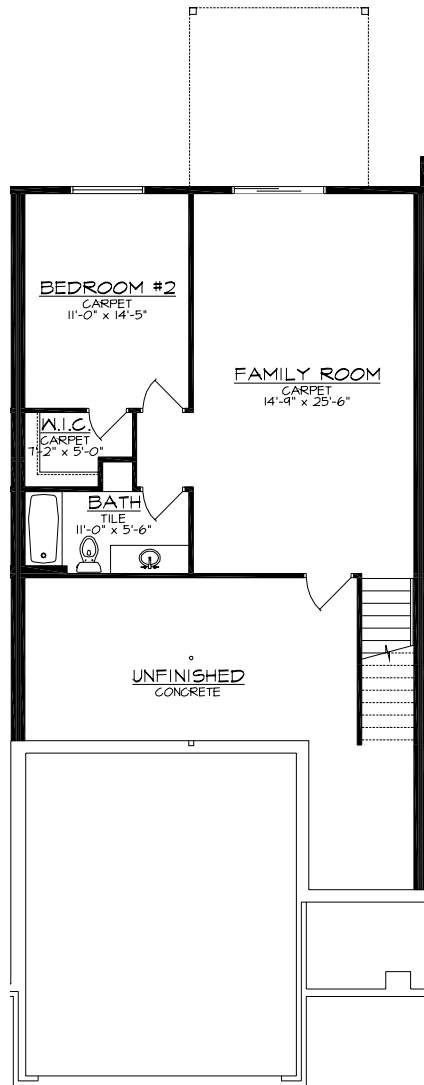


Lower Level - 777 S.F.

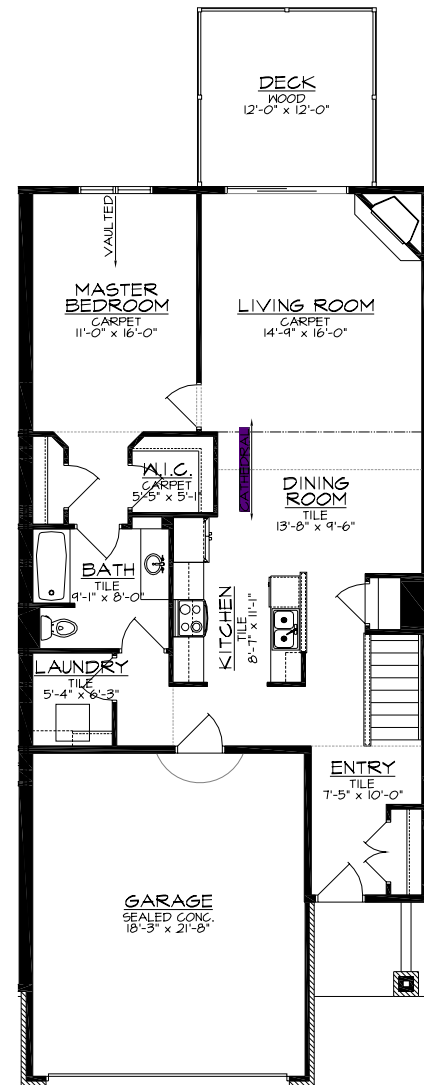


First Floor - 1,353 S.F.

Baird's Crossing Condominiums
 2449 & 2451 Remington Road - Unit 1 - 2,130 S.F.



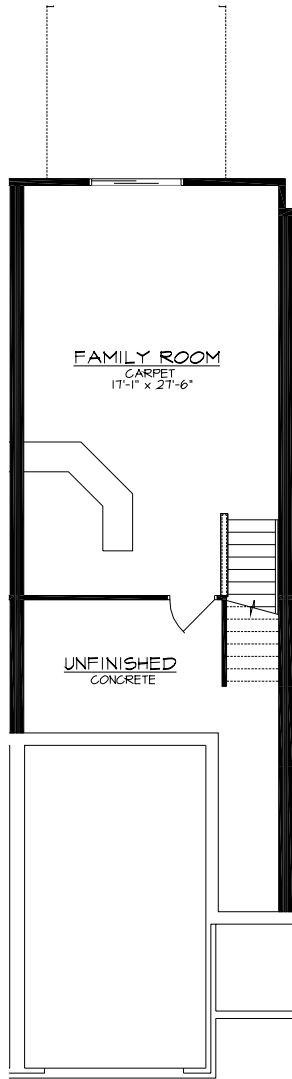
Lower Level - 738 S.F.



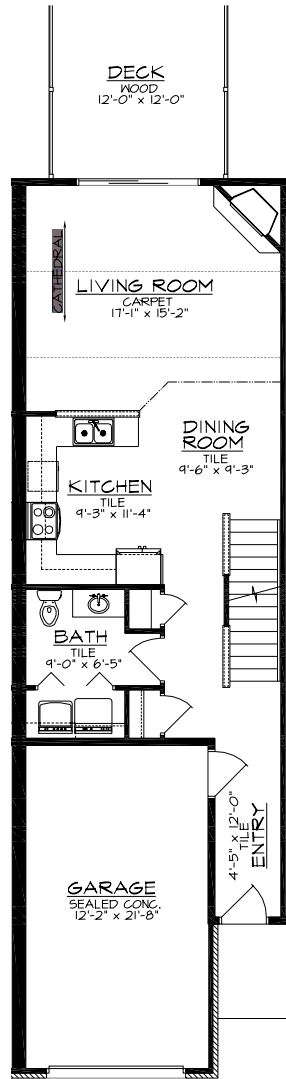
First Floor - 1,109 S.F.

Baird's Crossing Condominiums
 2449 & 2451 Remington Road - Units 2 & 5 - 1,847 S.F.

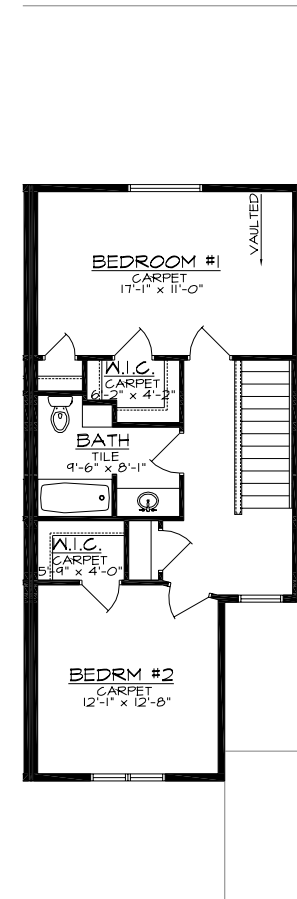
(Unit 5 mirrored)
 May 23, 2006



Lower Level - 503 S.F.



First Floor - 748 S.F.

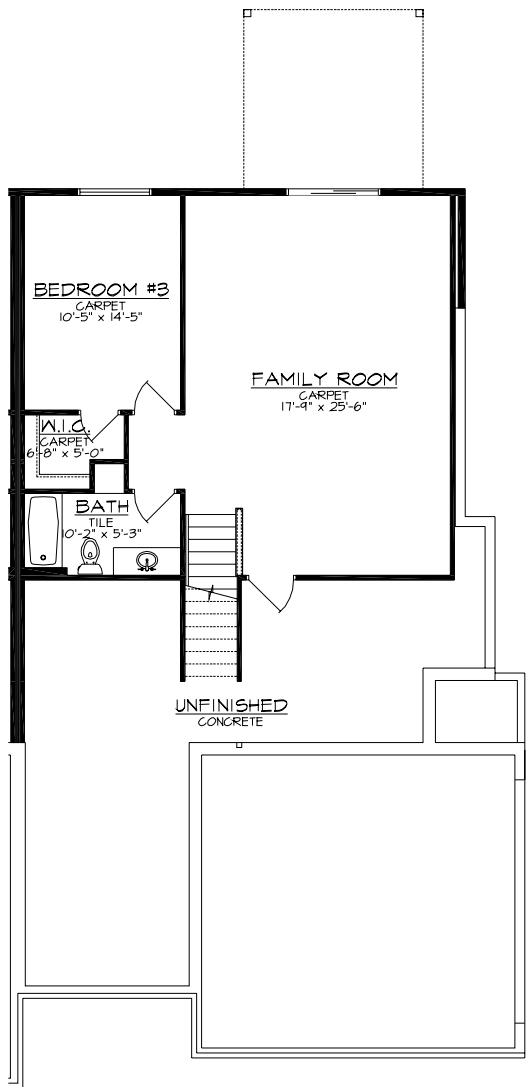


Second Floor - 655 S.F.

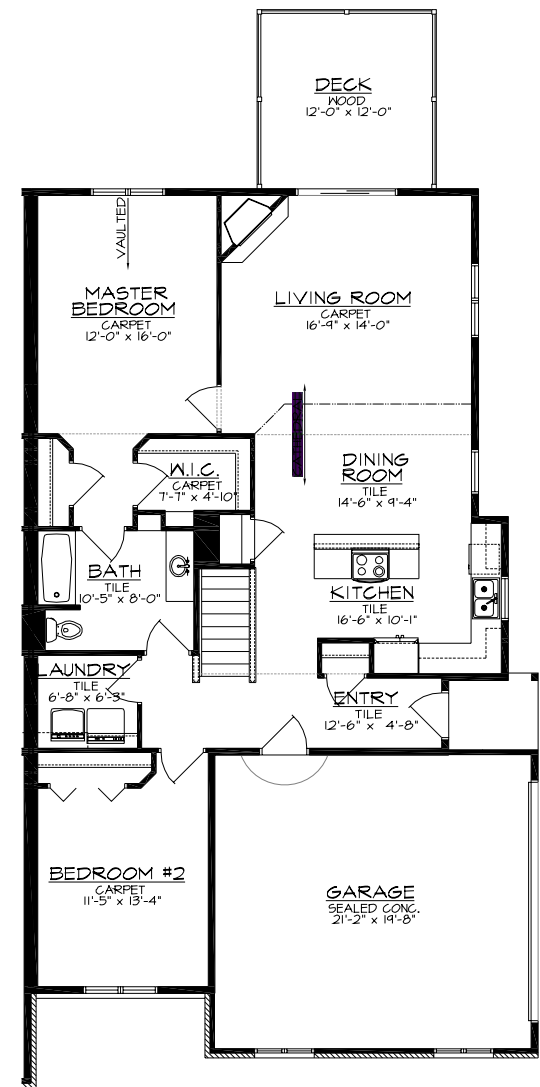
Baird's Crossing Condominiums
 2449 & 2451 Remington Road - Units 3 & 4 - 1,906 S.F.

(Unit 4 mirrored)

May 23, 2006

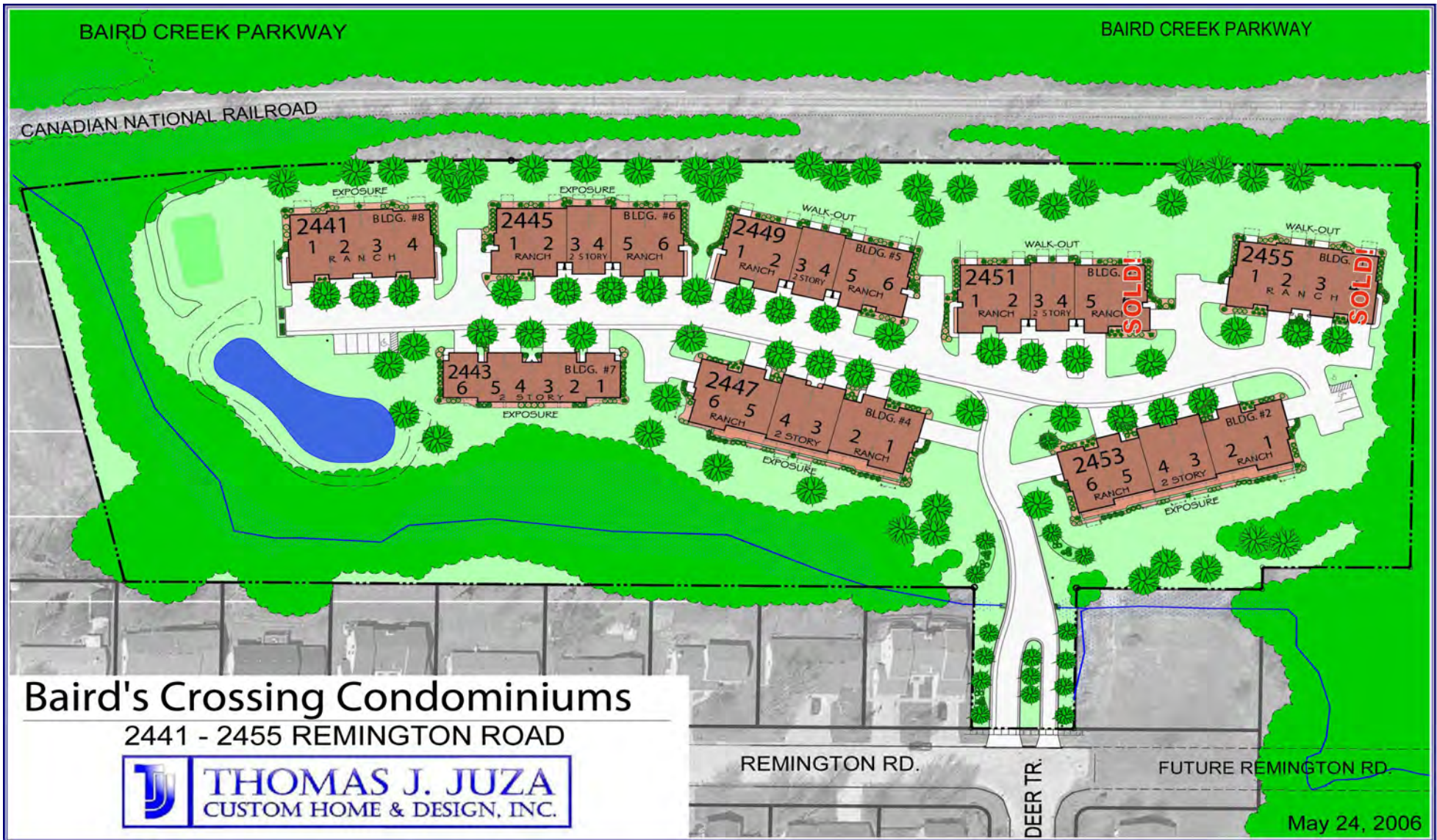


Lower Level - 777 S.F.



First Floor - 1,353 S.F.

Baird's Crossing Condominiums
 2449 & 2451 Remington Road - Unit 6 - 2,130 S.F.



Baird's Crossing Condominiums

2441 - 2455 REMINGTON ROAD

THOMAS J. JUZA
CUSTOM HOME & DESIGN, INC.

May 24, 2006